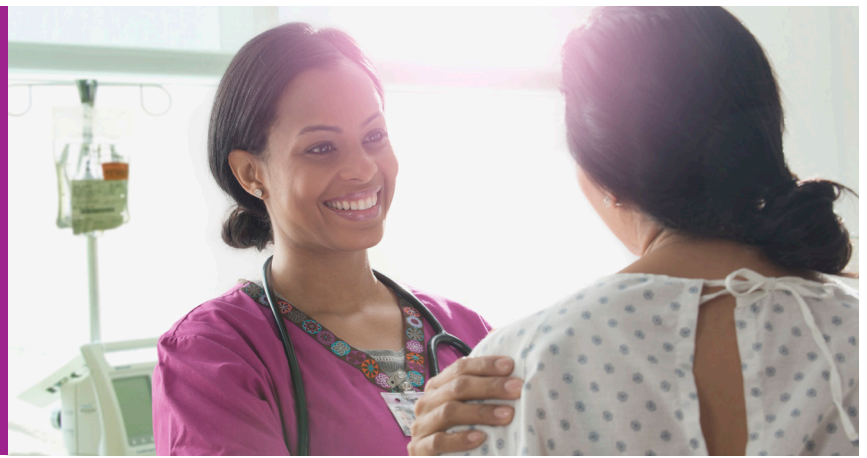




Ascension St. Vincent's



Hospitals and facilities

Ascension St. Vincent's Medical Center Riverside (est. 1916)
Ascension St. Vincent's Medical Center Southside (est. 1873)
Ascension St. Vincent's Medical Center Clay County (est. 2013)
St. Catherine Labouré Manor
Ascension St. Vincent's Urgent Care
Seton Pharmacies
Consolidated Laboratory Services
St. Vincent's First Care Walk-In Express Clinics
Optimal Imaging
Ascension St. Vincent's outpatient Health Centers

Outreach ministries

- Ascension St. Vincent's Mobile Health Outreach Ministry (MHOM) provides free acute and preventive medical care to those who are medically underserved in Northeast Florida, by bringing four fully staffed doctors'-offices-on-wheels to the neighborhoods where its services are needed most.
- The Rural Outreach Ministry serves the very poor who work in the agricultural fields of Putnam and St. John's counties.
- The Urban Outreach Ministry serves the working poor, the homeless, and their families within the urban neighborhoods of Duval, Clay and Nassau counties.
- The Pediatric Outreach Ministry provides children and adolescents, attending 24 middle and high schools in Duval County's Full Service Schools with access to medical care.
- Faith Community Nursing Program
- School Nurse Program
- Seton Center for Women and Infants' Health
- Mobile Mammography
- Emergency Pregnancy Services

Statistics

Admissions: 39,404
Outpatient visits: 949,948
Births: 3,957
Emergency room visits: 147,893

Staff and facility information

Associates: 4,990 Total employed providers: 339
Licensed beds: 943 Total employed physicians: 195
Clinic locations: over 120

About us

- Ascension St. Vincent's is a ministry of Ascension, America's largest nonprofit health system.
- Ascension St. Vincent's Inc. has more than 140 years of service to Northeast Florida and Southeast Georgia.
- Ascension St. Vincent's is the inpatient market share leader for invasive cardiology, cardiac surgery, thoracic surgery and orthopedics.
- The Family Medicine Residency Program at the Family Medicine Center (FMC) has graduated hundreds of physicians since its inception in 1972. Each year, the three-year residency program at FMC accepts 10 new residents; approximately 60% are female physicians.
- St. Catherine Labouré Manor is among 65 long-term care facilities nationwide awarded American Health Care Association's National Quality Award.
- Ascension St. Vincent's Southside has the area's only all-private Neonatal Intensive Care Unit (NICU) rooms.
- Ascension St. Vincent's Riverside has the region's only Gamma Knife® Perfexion™.
- Our cancer services include the Mayo Clinic Cancer Center at Ascension St. Vincent's Riverside.

Our Mission

Rooted in the loving ministry of Jesus as healer, we commit ourselves to serving all persons, with special attention to those who are poor and vulnerable. Our Catholic health ministry is dedicated to spiritually-centered holistic care, which sustains and improves the health of individuals and communities. We are advocates for a compassionate and just society through our actions and our words.

(continued on reverse side)

For Fiscal Year 2017, Ascension St. Vincent's was #1 in inpatient market share as a system for the following service lines:

- Cardiac surgery
- Cardiology – Invasive
- Orthopedics
- Thoracic surgery

Special honors and accreditation

The Leapfrog Group

Ascension St. Vincent's Riverside received an A grade for safety from The Leapfrog Group for Spring 2020.

IBM Watson Health

Ascension St. Vincent's Clay County received the IBM Watson Health 100 Top Hospital award in 2019.

Florida Hospital Association

- Ascension St. Vincent's received the Florida Hospital Association's (FHA) Community Benefit Achievement (over 150 beds) award in 2019 (note: Ascension St. Vincent's tied for winner in this category with Orlando Regional Medical Center).
- Ascension St. Vincent's received the Florida Hospital Association's (FHA) Innovation of the Year in Patient Care (over 150 beds) award in 2019.

Healthgrades

- Ascension St. Vincent's Clay County received the Healthgrades Patient Safety Excellence Award in 2019.
- Ascension St. Vincent's Southside received the Healthgrades Spine Surgery Excellence Award in 2020.

Baby-Friendly US, Inc.

Ascension Florida Hospitals receiving Baby-Friendly designation from Baby-Friendly US, Inc:

- Ascension St. Vincent's Clay County
- Ascension St. Vincent's Riverside
- Ascension St. Vincent's Southside

U.S. News & World Report

Ascension St. Vincent's Riverside: Recognized as high performing in 3 procedures/conditions — Heart Failure, Knee Replacement, Chronic Obstructive Pulmonary Disease (COPD)

Joint Commission Advanced Certification Programs

- Ascension St. Vincent's Riverside: Heart Failure, Primary Stroke Center
- Ascension St. Vincent's Clay County: Primary Stroke Center
- Ascension St. Vincent's Southside: Heart Failure, Primary Stroke Center